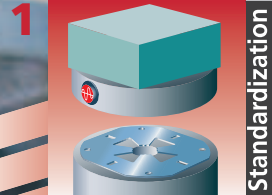


The art of clamping



Integration
Automation
Organization
Standardization



We'll find a fixture for your workpieces, too.



EROWA[®]
System solutions
from one single source

Fixture....clamping

In our "Fixture Design Department", we develop and produce adapted jigs. You give us a task, EROWA supply the solution.

Clamping a cast part

Technology Milling, medium-sized series.
Implementation Support points of variable height.
Operation Hydraulic clamping facility.
Supply Automatic coupling of hydraulic system on clamping of the pallet.

Positioning a turbine segment

Technology EDM, medium-sized series.
Implementation Fixed support points.
Operation Manual clamping lever.
Note Fixture for workpieces and electrodes.

Quick resetting of rotary transfer machines

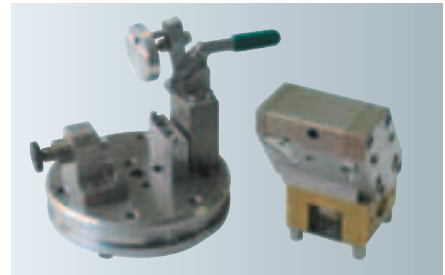
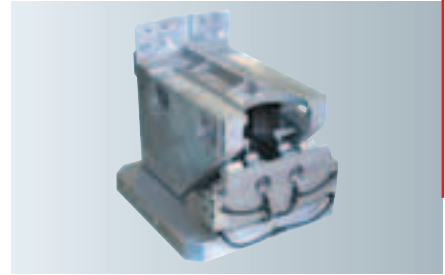
Technology Milling, big series.
Implementation Hydraulic fixture on MTS pallet.
Operation Cylinder moves variable jaws.
Supply Automatic coupling of hydraulic system on clamping of the pallet.
Note Resetting time: 30 seconds per position.

Coupling of pneumatic or hydraulic systems

Technology Milling, grinding, EDM.
Implementation Automatic coupling between chucks and pallets.
Operation Cylinder moves variable jaws.
Supply Automatic coupling of hydraulic system on clamping of the pallet.
Note Suitable for hydraulic and pneumatic systems and for vacuum clamping.

Permanent vacuum clamping

Technology Milling, one-off parts and medium-sized series.
Implementation Continuous vacuum clamping from the setting-up station to the magazine and the machine.
Supply Automatic coupling for vacuum between robot gripper and pallet in robot magazine and on clamping of pallets.
Note Pallets are changed by EROWA robot.



EROWA AG 049492 e/02.06

EROWA Group Business Network: a member of ORENDA Holding Ltd. Technical modifications reserved. Registered trademark of EROWA AG; Copyright © EROWA AG; for a number of products of EROWA AG, patents have been granted or are pending.

Switzerland
EROWA AG
Knutwilerstrasse 3
CH-6233 Büron
Tel. 041 935 11 11
Fax 041 935 12 13
e-mail: info@erowa.com
www.erowa.com

Our experience reduces
your set-up times


EROWA®