

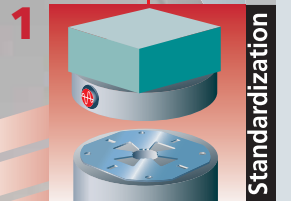
# MTS+ uncompromisingly monitored

Integration

Automation

Organization

Standardization



**MTS+** Ingenious functions for process safety taking up next to no space – and they're standard



**EROWA**<sup>®</sup>  
System solutions  
from one single source

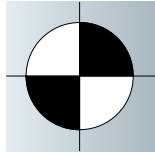
## Technical data MTS+

Clamping power with reclamping:	up to 18,000N
Repeatability:	< 0.003 mm
Air supply:	min. 8 bar
Monitoring:	open, closed, clamped

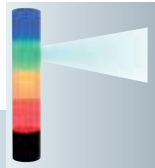
**MTS+** is the consistent further development of EROWA's MTS tooling system, which has been successfully used by customers for years. Although the clamping functions have been completely revised, any existing pallets and chucking spigots will remain 100% compatible. The function of the **MTS+** chuck is now monitored in each status.

## And these are the decisive advantages

+ **Precision;** Even narrower manufacturing tolerances ensure that **MTS+** now attains a repeatability of <0.003mm.



+ **Status check;** The status of the chucks is exclusively monitored through the air supply: open, closed, clamped. The evaluations of whether all the functions are in good working order, but also errors, can be transmitted to control units by means of electric signals.



+ **Rigidity;** The new locking technology of the **MTS+** achieves an enormous degree of rigidity.



+ **Clamping power;** Thanks to pneumatic reclamping, the clamping power of an individual **MTS+** chuck now amounts to up to 18,000N (conventional MTS: 12,000N).



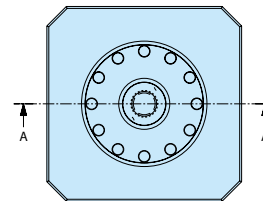
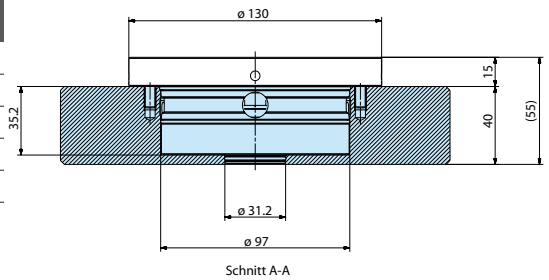
+ **Air supply;** Only two pneumatic connections are required for the entire control function (opening, monitoring and reclamping).

+ **Compatible;** The three variants of MTS chucks (MTS 81, MTS and **MTS+**) are fully compatible through the chucking spigots on the pallets.



+ **Stainless;** The components of the chucks are made of corrosion-resistant material. The individual chucks are completely sealed against contamination and liquids.

+ **Tolerant installation;** The installation of the closed-unit chucks on base plates and machine tables requires less work.



Switzerland  
EROWA AG  
Knutwilerstrasse 3  
CH-6233 Büron  
Tel. 041 935 11 11  
Fax 041 935 12 13  
e-mail: info@erowa.com  
www.erowa.com

**Official launch on the market from 2009**  
**Patent pending**



EROWA®