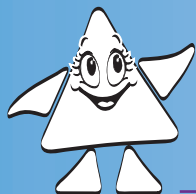


New



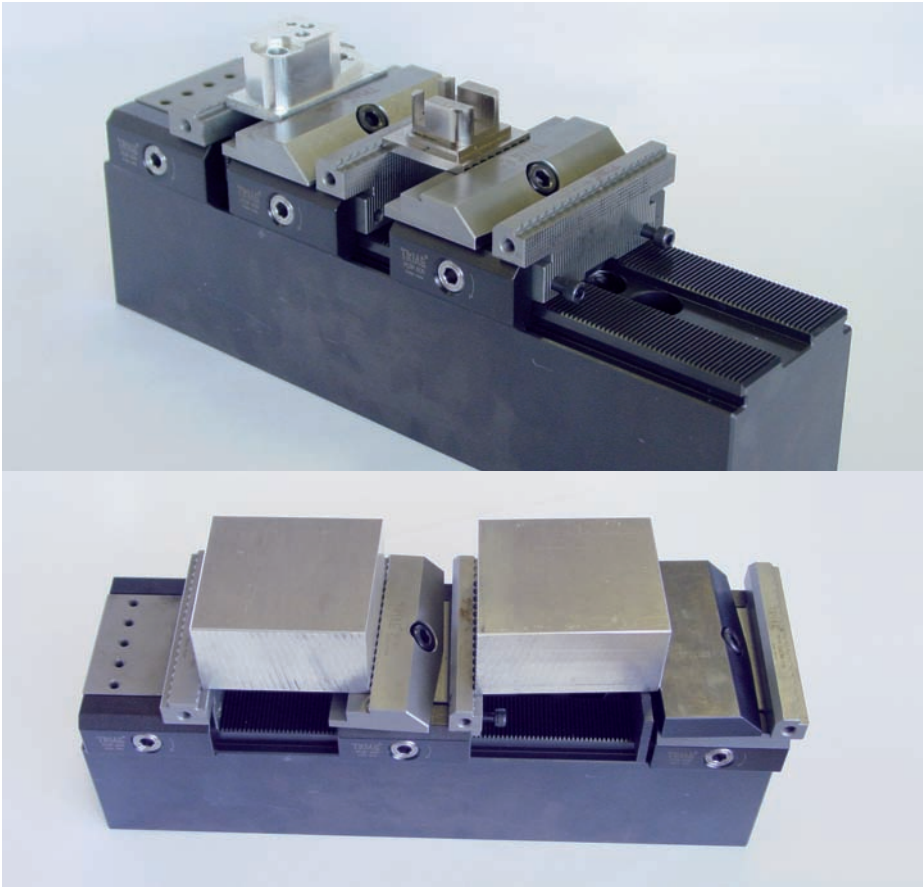
9. 2010

Precision tools

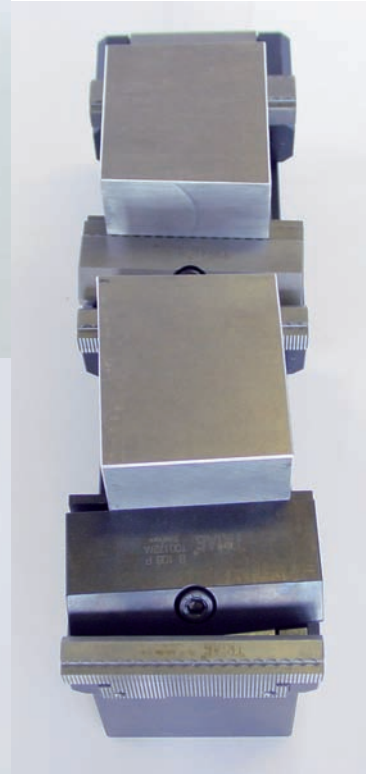
TRIAG®

Call REM Systems on 01452 314100 or email sales@remsystems.co.uk for more information

powerCLAMP Linear **PS1P 94L34-105 / PS1P 48L34-105**

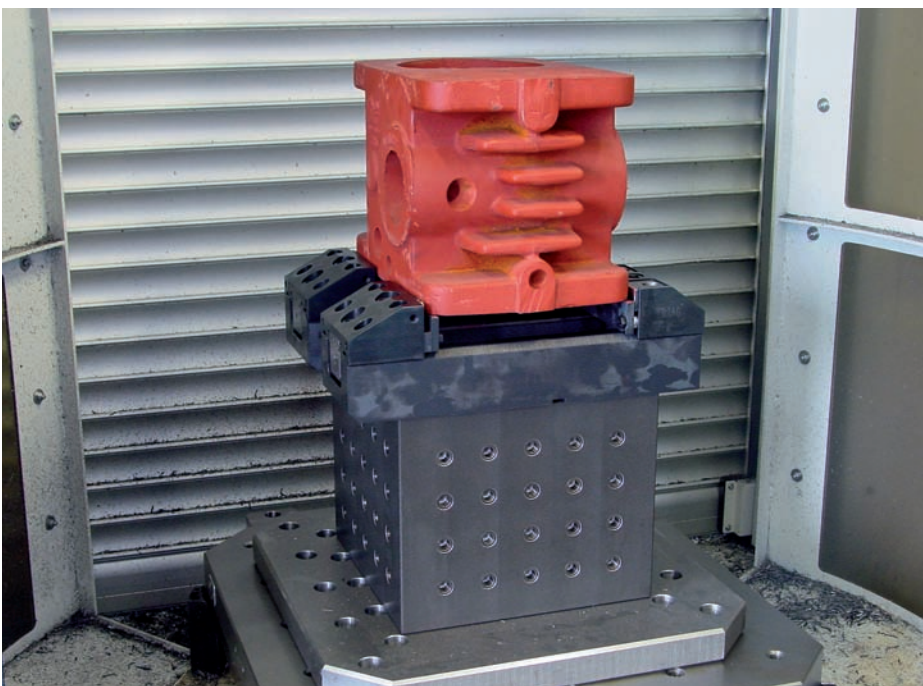


combines the advantages of the most popular Triag vice modules



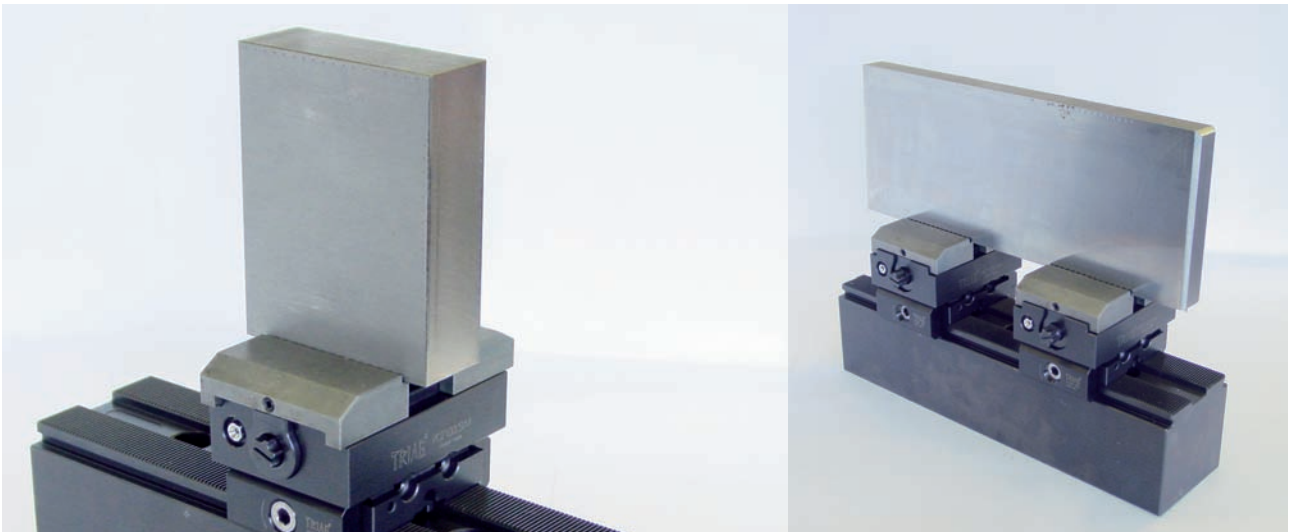
The teeth of this new linear vice module stamp the workpiece at both ends for massive better holding effect. Optimal depth control is guaranteed by the integrated steps in the jaws. A great variety of interchangeable clamping jaws is available, including a pivoting one for non parallel parts. Up to $\pm 4^\circ$ degrees may be compensated which is very important for rough blanks. The minimum distance between workpieces is only 43 mm.

aptoCLAMP 5axes

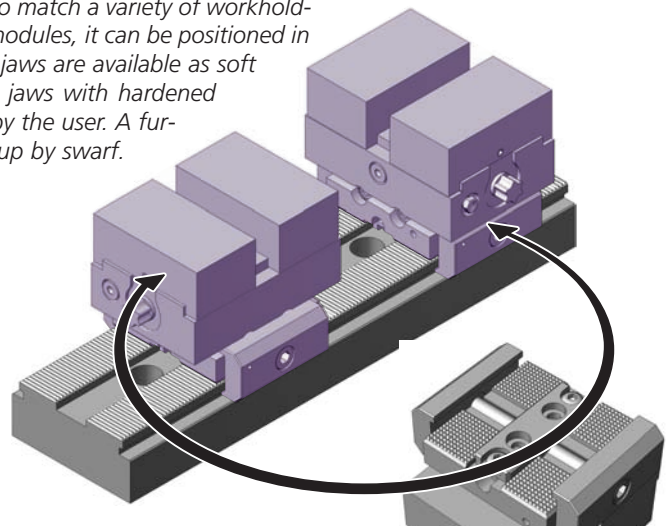


In the meantime we offer AptoClamp modules in slanted version. That ensures an optimal access to the workpieces on 5-axis machines. The clamping modules produce up to 7000 daN (7 tons) clamping force and are recommended for heavy roughing workholding.

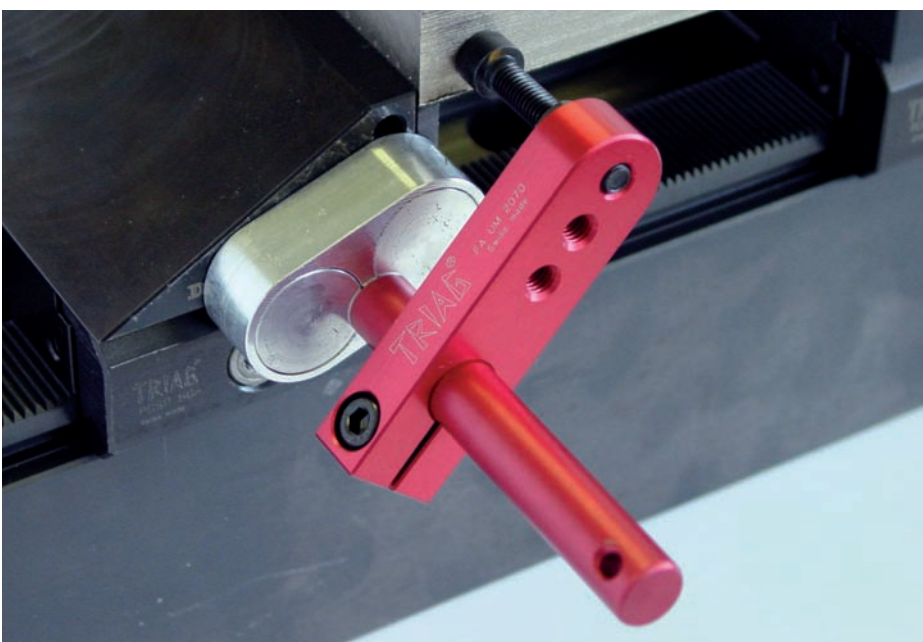
powerCLAMP Mini - centric clamping module PCZ 100 L50



This centric clamping module can be rotated by 90 degrees to match a variety of workholding requirements. Like all other powerCLAMP workholding modules, it can be positioned in increments of 2 mm along the base rail. Quick changeable jaws are available as soft machinable blanks, or in a hardened execution. Imprinting jaws with hardened teeth may also be ordered. The jaw symmetry is adjustable by the user. A further feature is its compact design not easily being clogged up by swarf.

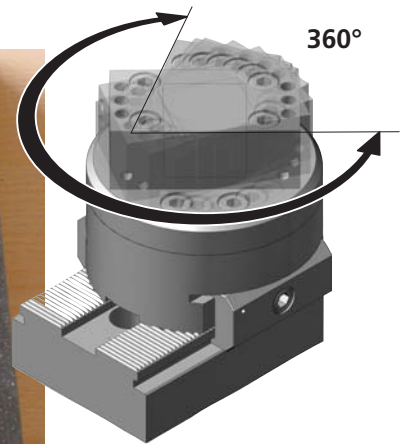
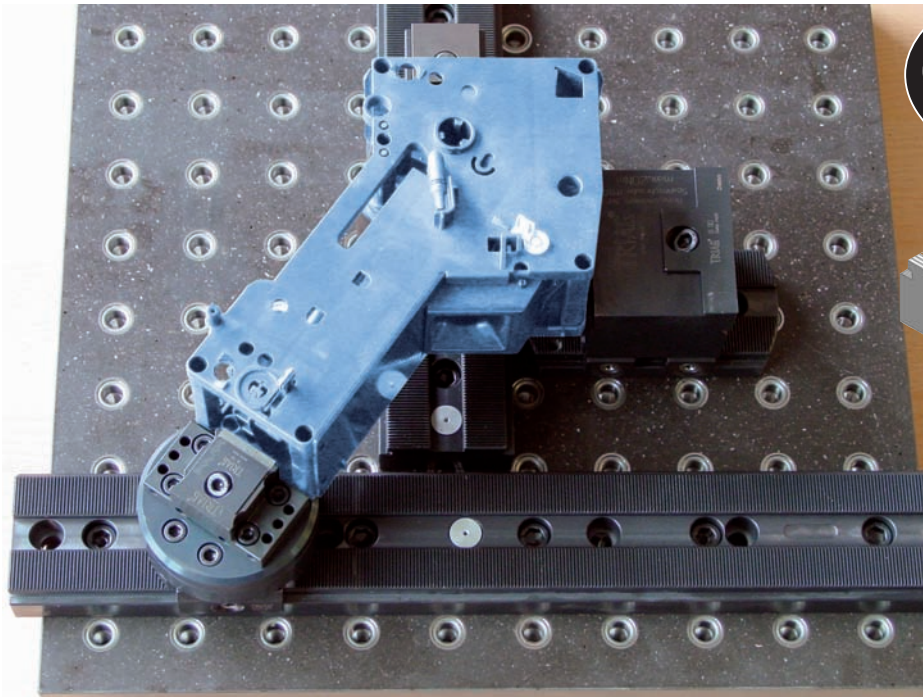


FA UM 2070 US Magnetic milling buffer (ultra strong)



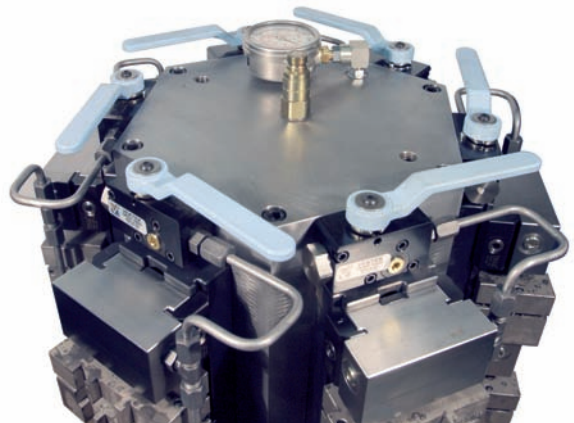
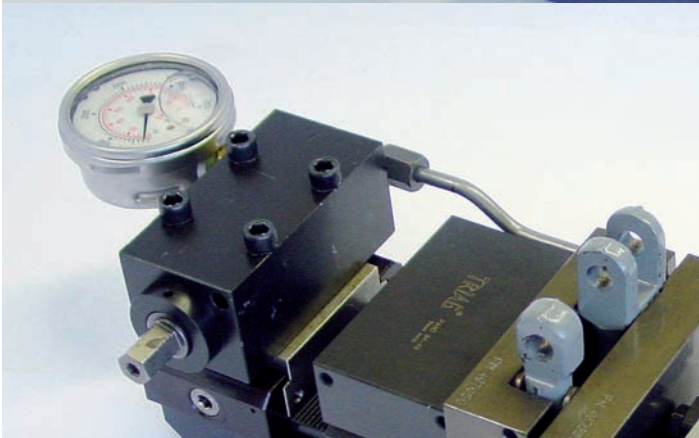
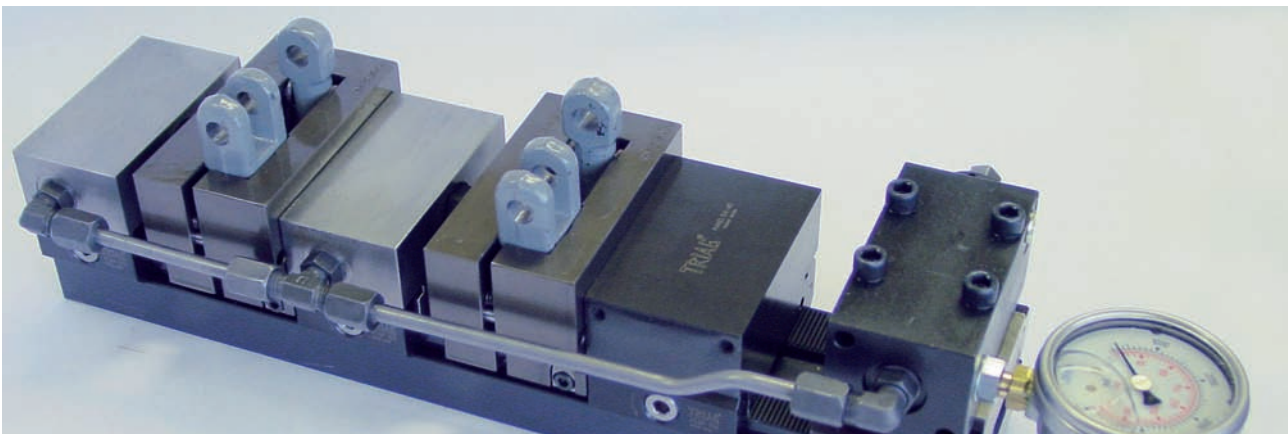
The magnetic milling buffer is provided with two magnets and has got a holding force of 120 N (~12 kg). The adhesive surface is protected against penetration of chips.

powerCLAMP Pivoting base module PTX 100 55



This base module is free pre-settable in 360°. It is specially suited for irregular formed workpieces. Most of the compactCLAMP vice modules and end modules as well as some of the microCLAMP modules can be combined with this pivoting base module.

powerCLAMP New: available in hydraulic execution



There is a high clamping force possible without physical exertion. The whole system is not vulnerable to pollution and well automated. The hydraulically operated cylinders move the cartridge and clamp the workpiece. Different workpieces can be clamped while you can replace the cartridges easily. All mechanical modules from the powerCLAMP program can be mounted on the powerCLAMP base rails.